

1916

COLLECTION

TM

# FREESTANDING TUB DRAIN

L. R. BRANDS™

AN OATEY INNOVATION



# FREESTANDING TUB DRAIN

The 1916 Collection Universal Freestanding Tub Drain works with freestanding island center and offset tubs. When installed at rough-in, it provides simple installation between the P-trap and tub — without needing access from below the floor.

Available in ABS, PVC or cast iron with a plastic or stainless steel flange, this drain is compatible with brass or Schedule 40 tailpieces.

1916 Collection is a carefully curated portfolio of thoughtfully designed, exceptionally engineered bath accessories that enhance both the form and function of every bath experience.



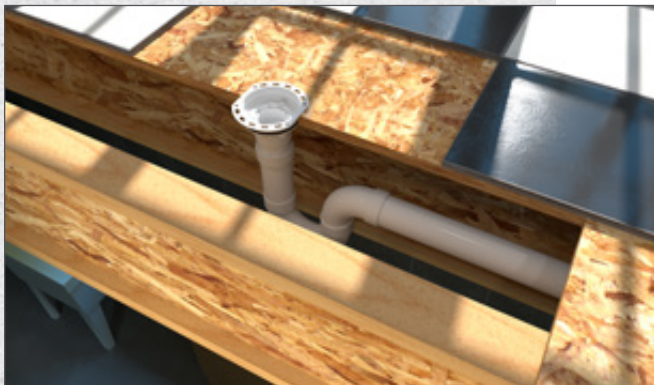
## EASY, FAST INSTALLATION

- Simplifies rough-in installation between P-trap and tub
- Eliminates “stub out” method and the need to access the drain from below the floor



## UNIVERSAL COMPATIBILITY

- Universal drain for freestanding/island center and offset tubs
- Compatible with brass or Schedule 40 tailpieces



## COMPACT SIZE

- Compact size allows the drain to fit inside 8 in., 10 in. and 12 in. joists
- Fits inside 4 in. hole saw opening, making this drain great for remodels



## JOBSITE READY

- Pre-installed, tool-free 1/4 turn test plug allows for testing up to 40 ft. of head
- Easy-to-grab protective cover keeps tile from being installed over the open drain and can be easily removed with channel locks



FTD5135



FTD5135P



FTD35



FTD35P



FTD357

## PART NUMBER

## PRODUCT DESCRIPTION

FTD5135	Plastic PVC construction with stainless steel flange
FTD5135P	Plastic PVC construction with a one-piece design
FTD35	Plastic ABS construction with stainless steel flange
FTD35P	Plastic ABS construction with a one-piece design
FTD357	Cast iron construction meets fire code standards

## EACH KIT INCLUDES:

- Freestanding tub drain body
- Protective cap
- 1.5 in. X 2 in. Schedule 40 PVC/ABS adapter  
*(Adapter not included with FTD357)*
- 1.5 in. X 8 in. flanged brass tailpiece
- 1.5 in. X 8 in. threaded brass tailpiece
- Slip joint nut
- Slip joint washer
- 1.5 in. Schedule 40 PVC/ABS threaded tailpiece adapter
- Quarter turn test plug
- Cutout template
- Lubricant

PATENT PENDING